

NO EXCUSES!

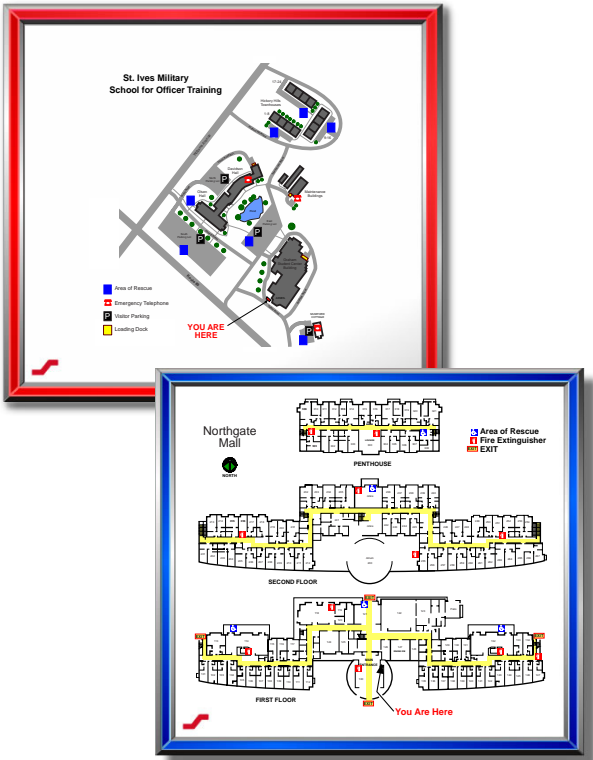
Prepared using fade resistant, UV-enduring quality aluminum display frame.

GD8

DI Graphic Display Frame

The GD8 DI Graphic Display Frame is designed to assist in the effective preparation of a proactive Emergency Operation Plan (EOP). With changing requirements from NFPA it provides the means and support as a year round training tool in requirements. The GD8 Graphic display provides a clear static layout of a building or campus and aids in requirements for public awareness of the building layout and evacuation egress routes.

The GD8 DI graphic display frame is the state of the art method for displaying messages. Utilizing UV durable inks that resist fading and harmful effects from light exposure, the GD8 DI boasts long lasting vibrant images, and offers the broadest selection of colors available. The graphic image is computer generated and plotted directly onto the back side of a clear and cuts glare to a minimum. The graphic is plotted onto the image from cleaning and wear and also protecting from water or environmental effects.



Standard Features:

- Full color image printed on the reverse side of a standard white background with colored image line work
- Graphic produced with UV rated inks and permanently laminated to resist environmental weather damage
- Rigid 1/8" ABS back plate
- Assembly and mounting hardware supplied
- Concealed hardware, eliminating tampering
- Available in 3 standard sizes, custom sizes up to 34" x 44"

GD8 Features:

- Different colors offer easy meaning of the graphic in the frame (RED for FIRE, BLUE for SECURITY, etc...) Special colors available on special order basis.



ISO 9001 REGISTERED COMPANY



PANELVU

Space Age Electronics, inc.
www.1SAE.com
800.486.1723 Toll Free
508.485.0966 Local
508.485.4740 Fax

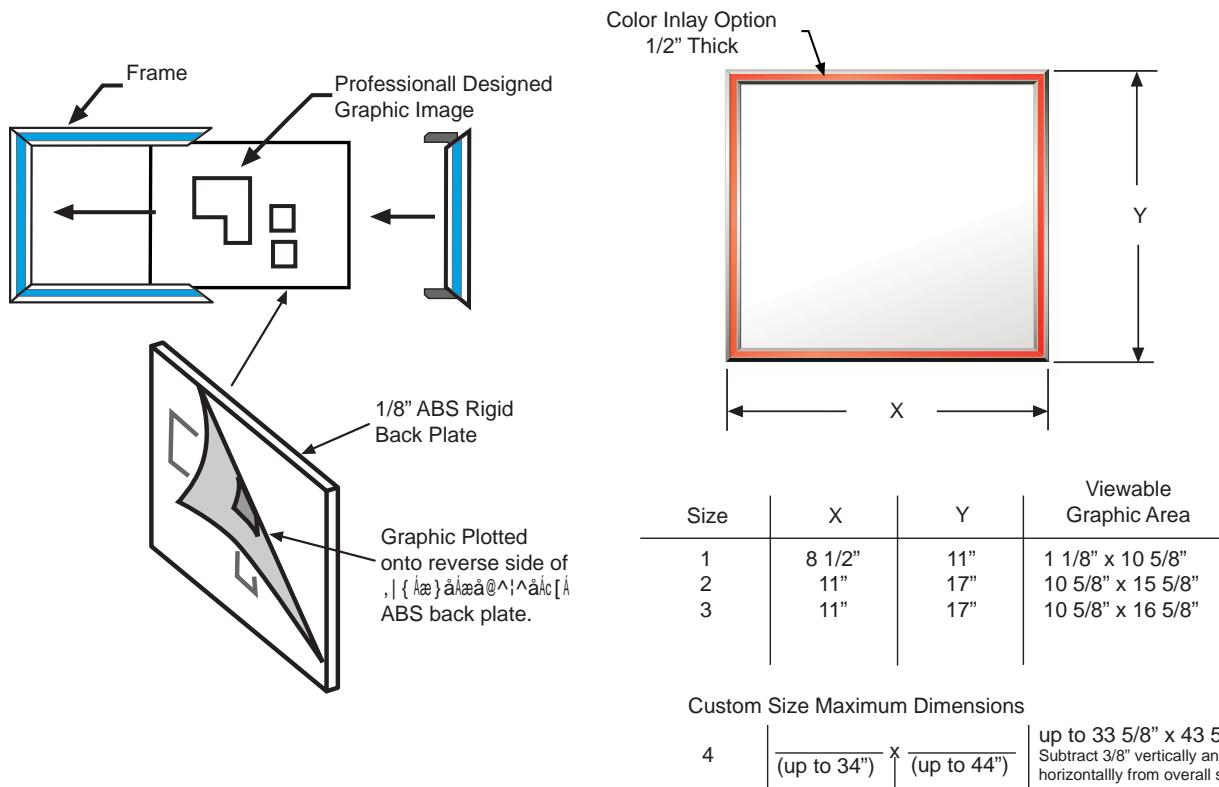
Specifications:

V@^ÁÖÖÌÁÖQÁÖ!æ]@â&ÁÖö•|]æ^ÁØ!æ { ^Á, ä||Áà^Á&[]•c!~&c^âÁ[-ÁæÁFDÌ+Ác@â&\Áæ]~ { ä}~ { Á^øc!~â^âÁ-!æ { ^ÉÁV@^Á, }â•@Á, ä||Áà^Áæ}Á æ!&@â&c~!æ|Á• [æ]Á { æcc^Á, }â•@Áæ||Á [c^!ÉÁæ•• { à|âá, äc@Á | Áá^*!^Á { äc^!^âÁ& []!^!•Áæ } äÁ& []&^æ|ÁâÁ@æ!â, æ!^Á- [!Áæ••^ { à|~ÉÁ V@^ÁÖÖÌÁ-!æ { ^Á, ä||Á@æc^Áæ& []cä } ~ [~•ÁFDG+|ä* @cÁ!^!^&cäc^Ác!ä { Áæ||Áæ! [] } äÁc@^Á*!æ]@â&Dc^øc!ä { æ*^ÉÁä}Á•] ^&ä, ^âÁ& [[!ÁÇ!^âÉÁ blue or black). The GD8 will be securely mounted to a wall. The mounting hardware will be concealed for security to prevent any unauthorized removal or alteration.

With supplied graphic information established, a professionally designed and laminated building Emergency Operation Ú|æ]ÁÇÖUUUÉÁ { æ]ÉÁä}•c!~&cä []•ÉÁæ } äØ [!Á [c@^!Á] ^!cä } ^ } c!ä } ~ [! { æcä [] Á, ä||Áà^Áä } & [!] :æc^âÁä}c [Ác@^ÁÖQÁæ••^ { à|~ÉÁV@^Á, }æ|Á|æ^ [~c!ä, ä||Áà^Á]! [-^••â []æ||^Á]!^æ!^âÁ- [!Á] [!] ^!Ááá^ } cä, &æcä [] Á [-Á^*!^••Áæ } äÁ^øc!ä! [~c^•ÉÁæ] [] *Á, äc@Á [c@^!Á•] ^&ä, &Áæ } äÁä { [] :cæ } c! information clearly displayed to initiate immediate action when required.

DI Assembly Graphic:

The GD8 DI assembly frame will incorporate a professionally designed graphic, plotted onto the back of .012 mil piece [-ÁÇÖTÓUÓFGDÁ] [! ^&æ!à []æc^Áæ&\]!ä}c!ä, [{ ÉÁV@^Á, [{ ç•Á ~!-æ&^Ác^øc~!^Áá~•^•Á|ä* @cÁæ } äÁ&~c•Á*|æ!Ác [ÁæÁ { ä}ä { ~ { ÉÁV@^Á, [{ Á, ä||Áà^Á] ^! { æ } ^ } c!~Áæâ@^!^âÁc [ÁæÁ• [!ää] ä^&^Á [-ÁFDÌ+ÁÇÖUÁ!ä* äááæ&\Á] |æc^Á- [!Á•c!^ } *c@Áæ } äÁä~!æàä|äc~ÉÁV@^Á] [! ^&æ!à [] æc^Á, [{ Á ä•Á!æc^âÁ&|æ••ÁÇÉÁæ&& [! ää } *Ác [ÁÇEUVTÁÖÌ!Ác~ } ^!Ác^•c!- [!Á•~!-æ&^Áà~! } ä} *Á&@æ!æ&c^!ä•cä&•Á [-Áà~!|ää] *Á { æc^!äæ}ÁÇ, !^Ác^•cDÉÁWXÉ durable inks will be used to resist fading and harmful effects from light exposure producing long lasting images.



Ordering Information:

Part #	Description
SSU52000	Size 1 (8 1/2" x 11") Display Frame
SSU52001	Size 2 (11" x 17") Display Frame
SSU52002	Size 3 (17" x 17") Display Frame
SSU52003	Size 4 Custom Sized Display Frame up to 34" x 44"
SSU52004	GD8 DI Graphic Display custom artwork
SSU52006	Graphic design layout service CAD/ENG additional time/proc

PANELVU

Space Age Electronics, inc.
www.ISAE.com
800.486.1723 Toll Free
508.485.0966 Local
508.485.4740 Fax

No Excuses, Just Solutions!

This document is subject to change without notice, see doc # ED0479 for legal disclaimer

GD8 DI Preliminary Quote

Ordering:

Follow these 3 steps for Space Age Electronics to generate a preliminary quote for your Graphic/Map or try our free on-line Product Quote Pages at www.1SAE.com

1 QUANTITY (total number of displays needed)

Determine the quantity of maps that are needed for your facility(s). This assumes all maps needed will be of the same size. If you need different size maps, you will need separate quotes for an accurate determination of your product needs.

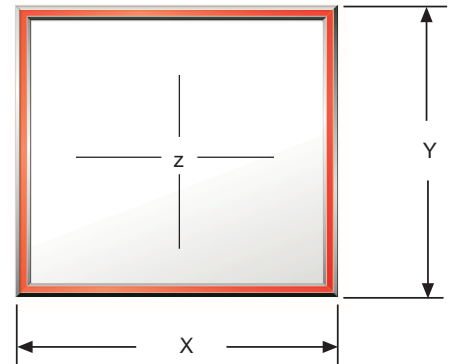
Building that are required to have a visual evacuation/map display.

2 Determine what SIZE (total number of displays needed)

Space Age offers 4 sizes (one size selectable per quote)

Check only one:

Size	X	Y	Z
<input type="checkbox"/> 1	8 1/2"	11"	1 1/8" x 10 5/8"
<input type="checkbox"/> 2	11"	17"	10 5/8" x 15 5/8"
<input type="checkbox"/> 3	11"	17"	10 5/8" x 16 5/8"
Custom Size Maximum Dimensions			
<input type="checkbox"/> 4	(up to 34")	(up to 44")	up to 33 5/8" x 43 5/8" Subtract 3/8" vertically and horizontally from overall size.



3 Determine Graphic/Map LEVEL OF DIFFICULTY. Compare your drawings to the following levels of complexity.

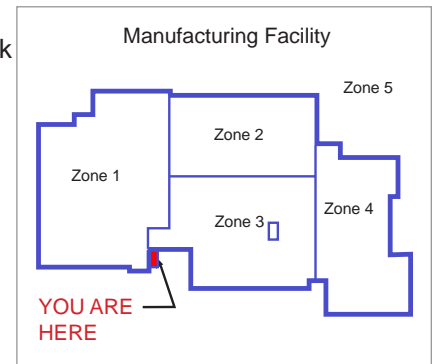
Check only one:

Simple

Less than 20 rooms, with vertical and horizontal line work and basic building outlines. Standard artwork is black linework and lettering on a white background.

(check additional that may apply)

- Additional graphic colors required: # _____
- Each room numbered or titled
- Graphic display has a title
- Title and north arrow



Additional pertinent details: _____

(Quoting details continued on next page...)

PANELVu

Space Age Electronics, inc.
www.1SAE.com
800.486.1723 Toll Free
 508.485.0966 Local
 508.485.4740 Fax

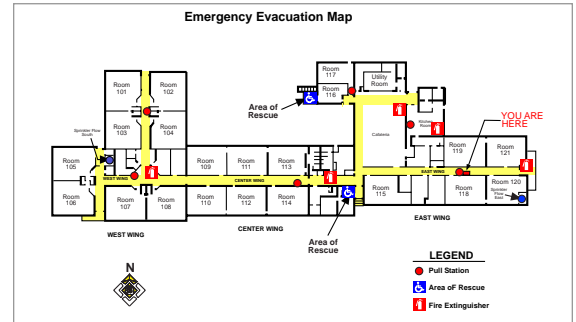
No Excuses, Just Solutions!

Medium 20-50 rooms with vertical and horizontal line work. Hallways, stairwells and elevators depicted. Standard artwork is black linework and lettering on a white background.

(check all that may apply)

- Additional graphic colors required: # _____
- All rooms titled and/or numbered
- Icons used for identification with legend
- Labeled exits
- Major egress escape routes
- 'You Are Here' icon
- Legend for icons
- Device icons
- Area of Rescue

Additional pertinent details: _____

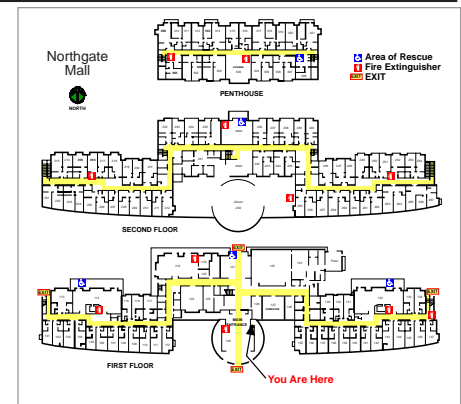


Difficult 50 rooms or more, building outline may have curves and angles. Standard artwork is black linework and lettering on a white background.

(check all that may apply)

- Additional graphic colors required: # _____
- Building outline has curves and angles
- Hallways, stairwells and/or elevator details
- Entrances labeled including loading docks, etc.
- All rooms are titled and/or numbered
- 'You Are Here' icon
- Leader lines to depict details or special instructions
- Multiple icons and details on display legend
- Device icons
- Address location for devices (ie: pull station, smoke detector, etc.)
- Major Egress escape routes

Additional pertinent details: _____



Campus Type Complex This is a facility/site/campus complex that shows multiple buildings, parking lots, roads, walkways etc. Standard artwork is black linework and lettering on a white background.

(check all that may apply)

- Additional graphic colors required: # _____
- Graphic title
- Building labels, road names and other similar details
- Buildings and roads have curved lines or angles
- Trees, shrubbery
- 'You Are Here' icon

Additional pertinent details: _____

